



MERSEY
MARITIME

State of the Maritime Region Report

The Economic Contribution of the Maritime Sector
in the Liverpool City Region

Launched: June 2022





Mersey Maritime commissioned the Centre for Economics and Business Research (Cebr) to undertake a comprehensive economic impact analysis to highlight the importance of the industry to the Liverpool City Region economy. This document summarises some of the key findings for the period 2017 to 2019.

STRONGER TOGETHER



Worth
£5 billion

to the LCR economy through
business turnover



48,200

jobs supported

Productivity of workers

£93,301 v £56,670

(LCR maritime)

(UK economy average)



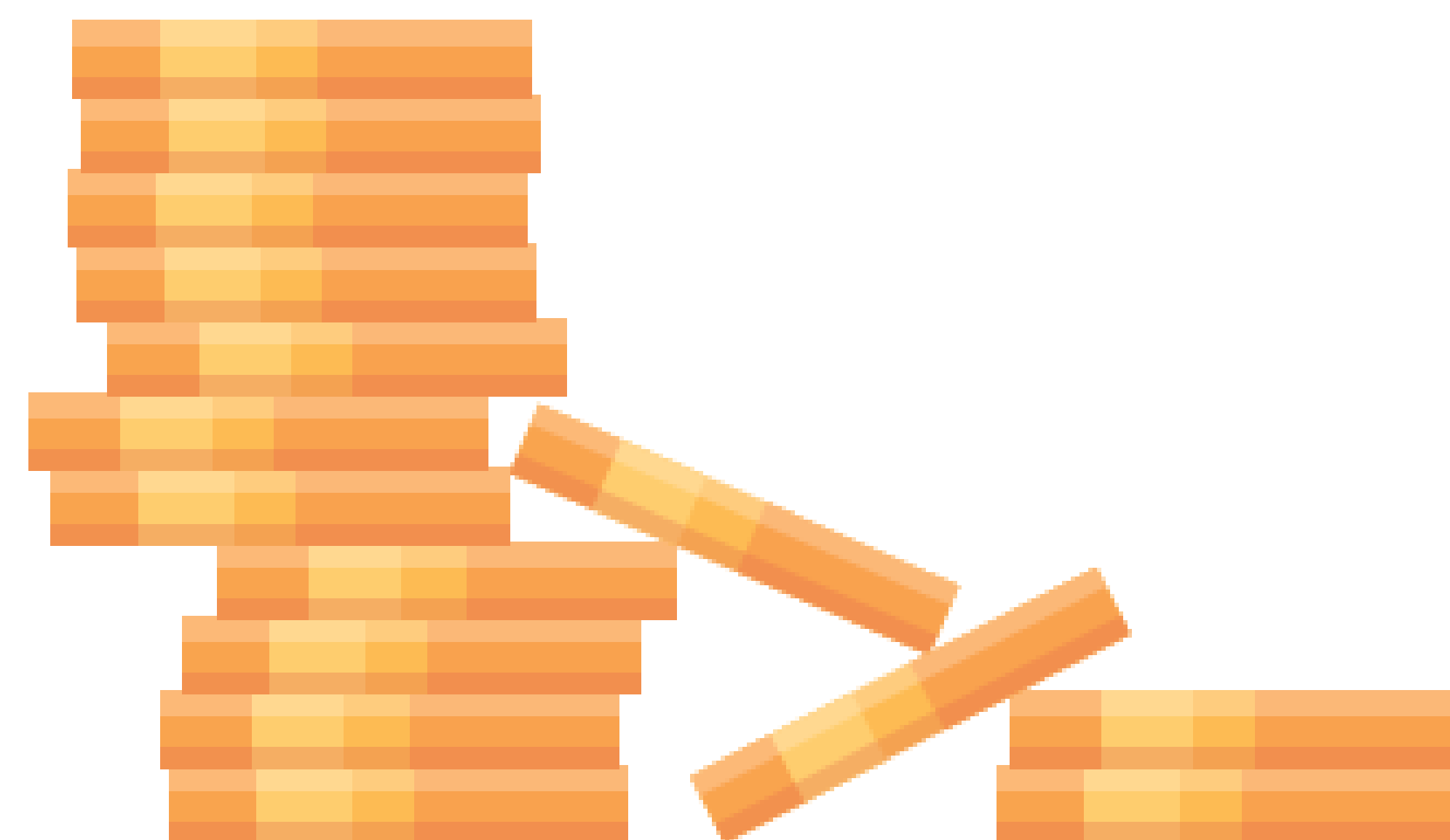
Supported
4.65 jobs

for every job generated by
the sector in 2019

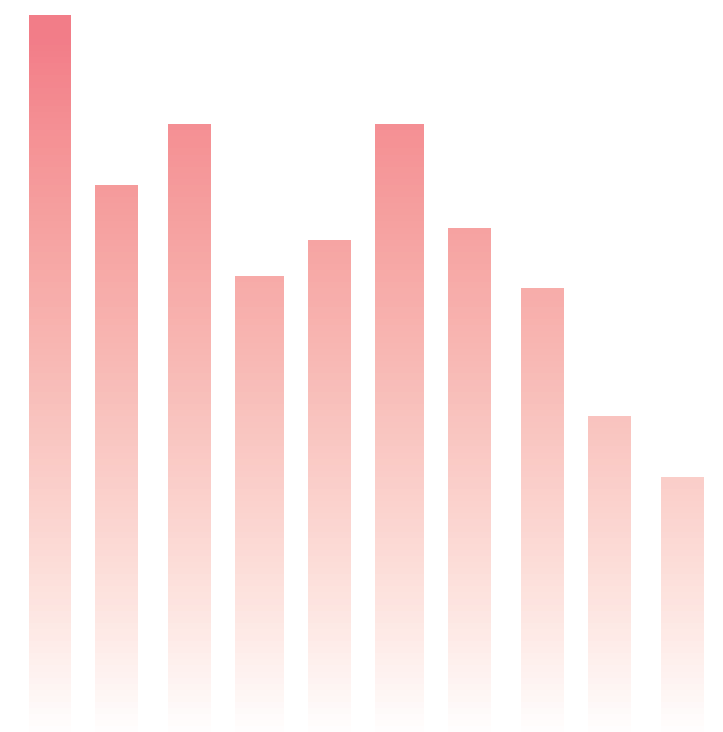


7.2%

growth is expected
in real terms
between 2021-25



A GROWING SECTOR



**£174
million**

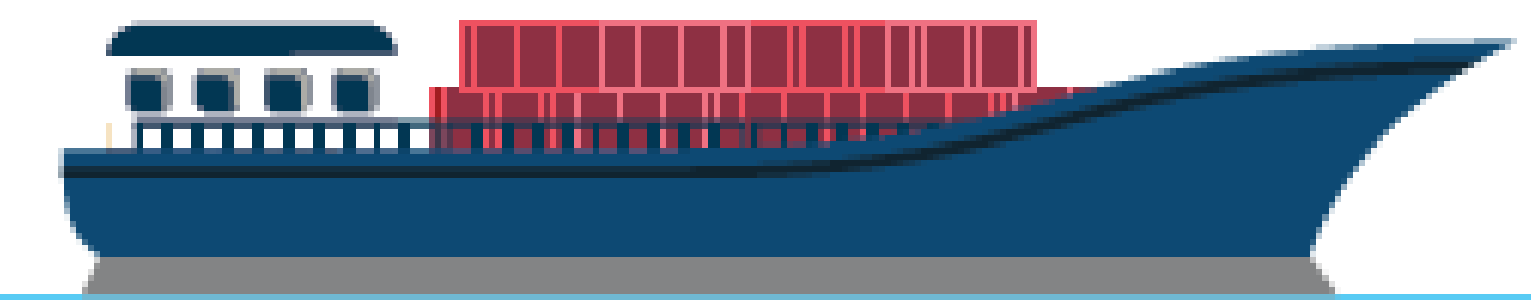
The LCR maritime direct contribution to the UK economy (various taxes such as income, corporation, VAT) - 3.4% of the total



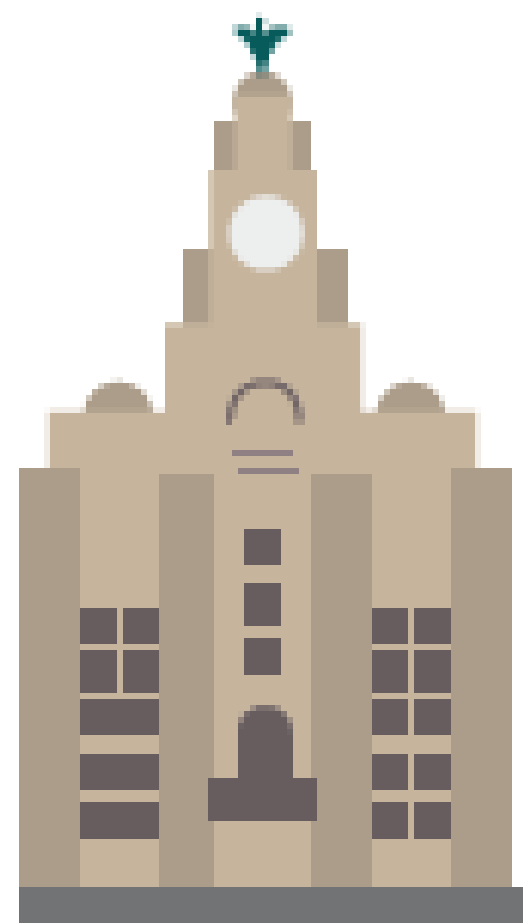
**£706
million**

Direct impact to the UK economy through exports

490%



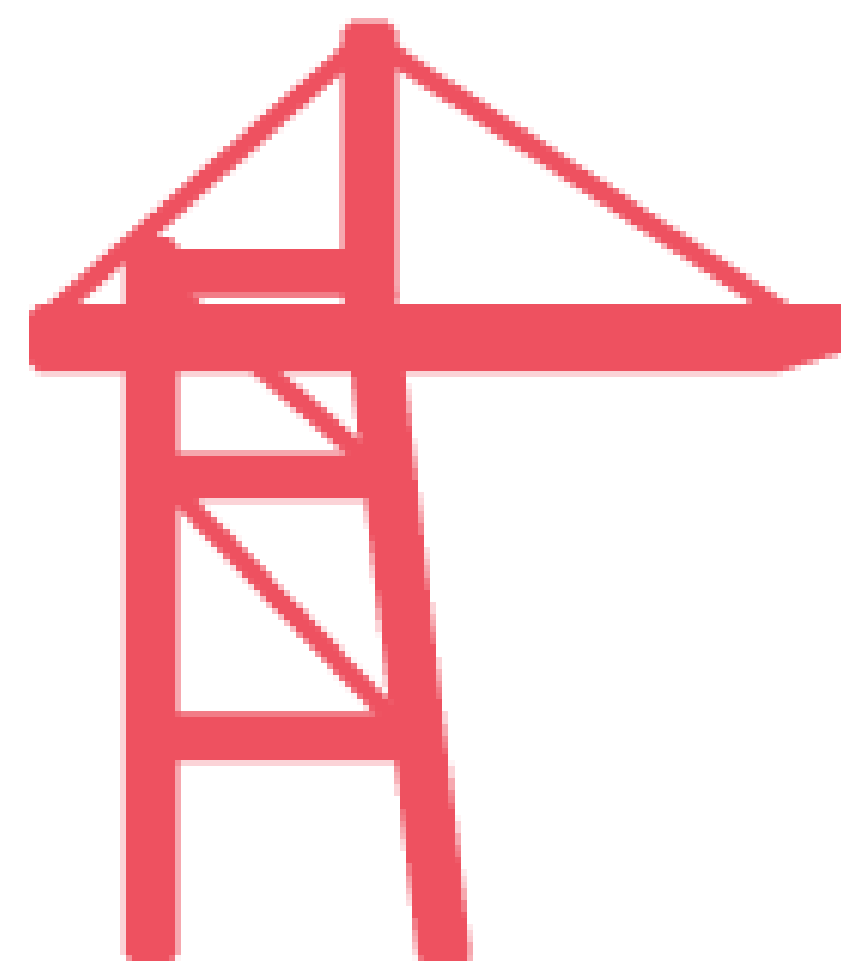
Direct turnover growth in the marine engineering and scientific sector, 2010-2019



181%



LCR maritime growth between 2010 and 2019



**Shipping industry
a primary driver of
LCR maritime**

Shipping turnover accounted for **66%** of the sector in 2019

IMPACT OF COVID-19



since 2010 with 4,000 more direct people employed

299% since 2010
83% since 2015

The text is accompanied by a large blue upward-pointing arrow on the left side.

Direct employment growth in marine engineering
and scientific roles

Estimated by Cebr that in 2020 the
industry contracted by 17% as a result
of the pandemic

17%

but



**Strong sector
recovery predicted**

- maritime industry to reach its 2019 levels by 2022

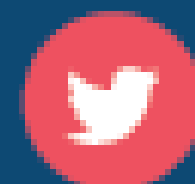


Join the **Mersey Maritime** Ecosystem

Mersey Maritime is an inclusive membership organisation open to all maritime and supply chain businesses, associated public sector partners, trade associations and charitable organisations. Members can be based anywhere in the UK or overseas, provided they have a commitment to the maritime sector, particularly in the North West.



merseymaritime.co.uk



[@Mersey_Maritime](https://twitter.com/Mersey_Maritime)



[Mersey Maritime Ltd](#)